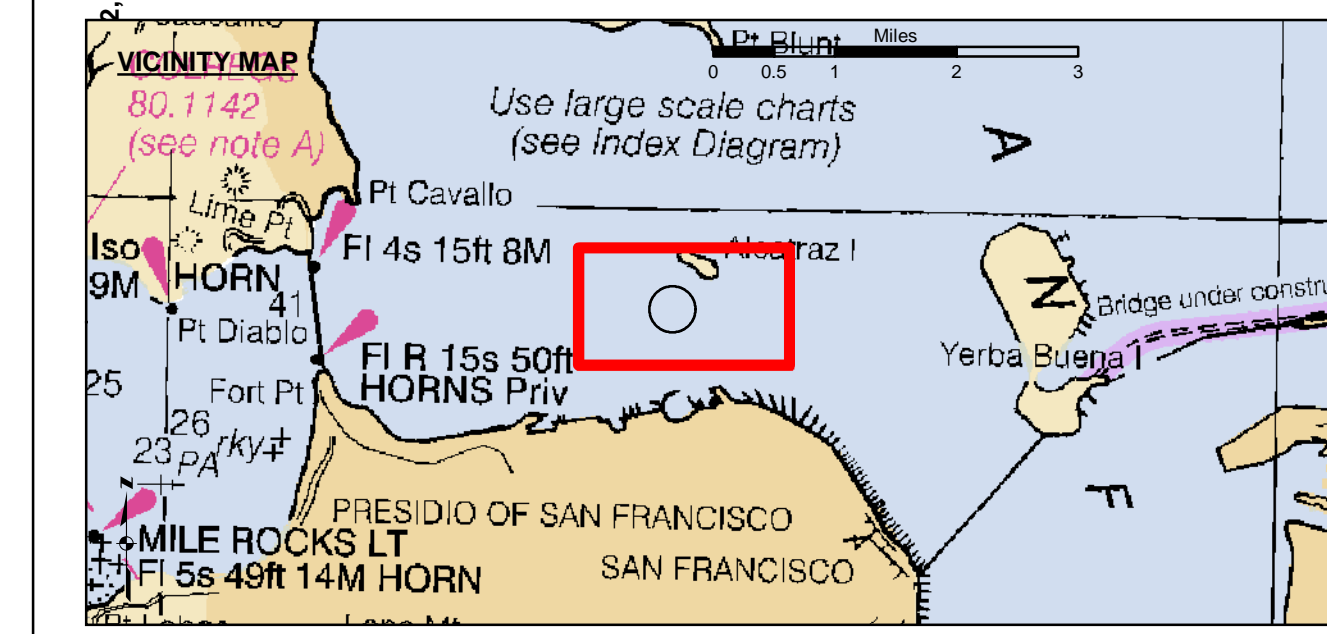
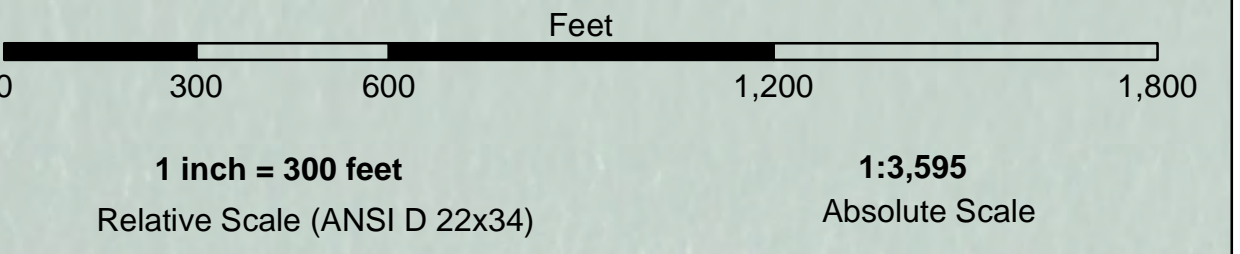


**PRELIMINARY ISSUE**  
THIS PLAN ISSUED FOR  
ADVANCE INFORMATION ONLY

**LAMBERT COORDINATES**

POINT	X	Y	
U.S.G.S. MON: 57	ELEV: - 14.00	6,005,367	2,123,290
TRANSAMERICA BUILDING	6,011,912	2,117,586	
1,000 FT. RADIUS	6,005,935	2,127,235	
ALCATRAZ LIGHT	6,008,552	2,129,010	
ALCATRAZ BUDY	6,008,367	2,127,186	



- Federal Navigation Channel
- Shoaling Area
- Placement Area
- Wreck Area
- Submerged Wreck
- Zone III Angle Points
- Beacon, General
- Obstruction Point
- Navigation Buoy
- Navigation Buoy
- Shoalest Sounding\*
- Contour Lines
- Every 10'**
- 20' to -120'**

NOTES:  
HORIZONTAL COORDINATE SYSTEM:  
NORTH AMERICAN DATUM OF 1983 (NAD83), PROJECTED TO THE STATE PLANE COORDINATE SYSTEM (SPCS), CALIFORNIA ZONE III. DISTANCE UNITS IN U.S. FEET.  
VERTICAL DATUM:  
SOUNDINGS ARE SHOWN IN FEET AND INDICATE DEPTHS BELOW MEAN LOWER LOW WATER.  
  
THE INFORMATION DEPICTED ON THIS MAP REPRESENTS THE RESULTS OF A SURVEY CONDUCTED ON THE DATE INDICATED AND CAN ONLY BE CONSIDERED TO REPRESENT THE GENERAL CONDITION EXISTING AT THAT TIME.  
  
BASE MAPS ARE USDA NAIP 2010.  
\*SHOALEST SOUNDING PER QUARTER PER REACH

DRAWING NOT TO BE USED FOR NAVIGATION. ONLY CHANNEL CONDITION AT DATE OF SURVEY. THE LOCATION OF ALL NAVIGATION AIDS ARE BASED ON INFORMATION PROVIDED BY THE U.S. COAST GUARD. BUOY LOCATIONS REPRESENT THE POSITION OF THE SINKER ONLY. SOUNDINGS WERE TAKEN BY FATHOMETER AND ARE SHOWN TO THE NEAREST TENTH OF A FOOT. SOUNDINGS ARE BASED ON THE DATUM OF MEAN LOWER LOW WATER AT THE LOCALITY.

SURVEYED BY THE CORPS OF ENGINEERS.  
THE PROJECT DEPTH IS -40 FEET AT MLLW.

PLANE GRID AND COORDINATES ARE BASED ON LAMBERT PROJECTION, NAD 83, ZONE III CALIFORNIA AS DESCRIBED IN SPECIAL PUBLICATION NO. 235, PUBLISHED BY THE NATIONAL OCEAN SURVEY.

HORIZONTAL GPS CONTROL:  
COAST GUARD D-BEACON

VERTICAL CONTROL:  
BENCHMARK: 180 1936  
PID: HT0702  
MLLW = 3.972m(13.03ft)

NOAA STATION 9414290  
TIDE GAUGE LOCATION: SAN FRANCISCO

**US Army Corps of Engineers**  
San Francisco District  
450 Golden Gate Ave.  
San Francisco, CA 94102

**DISCLAIMER:** The United States Government furnishes this information as a service to the public. It is provided as a preliminary issue for advance information only. It is not intended to be used for navigation. The data represents the results of a survey conducted on the date indicated and can only be considered to represent the general condition existing at that time. The user is responsible for the accuracy of the data for their own intended purpose. The user is responsible for the accuracy of the data for their own intended purpose. The user is responsible for the accuracy of the data for their own intended purpose.

Chart Date: Jan 29, 2024

Surveyed By: TIMOTHY W. SHEBESTA

Plotted By: PDT

Checked By: PDT

Drawn By: PDT

**ALCATRAZ DISPOSAL SITE-SF11**  
CONDITION SURVEY  
25 JANUARY 2024

**Sheet Reference Number 1 of 1**